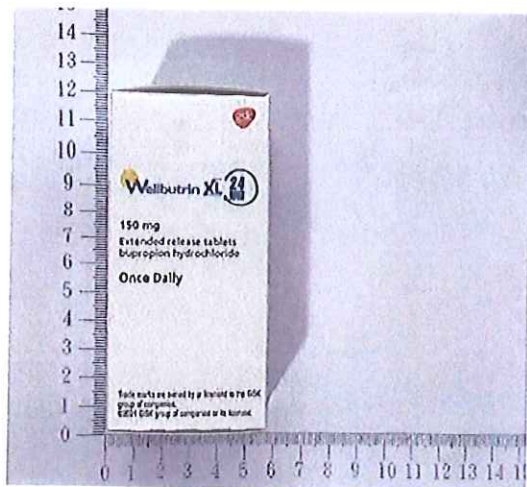
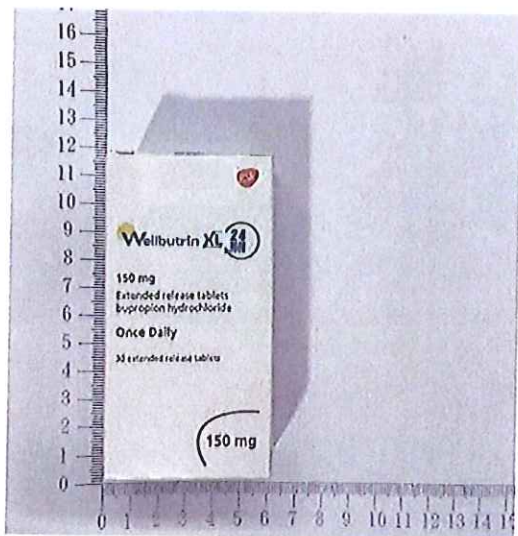


新包裝：



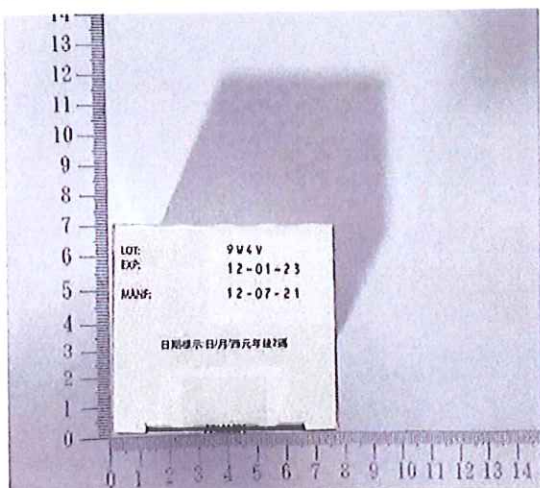
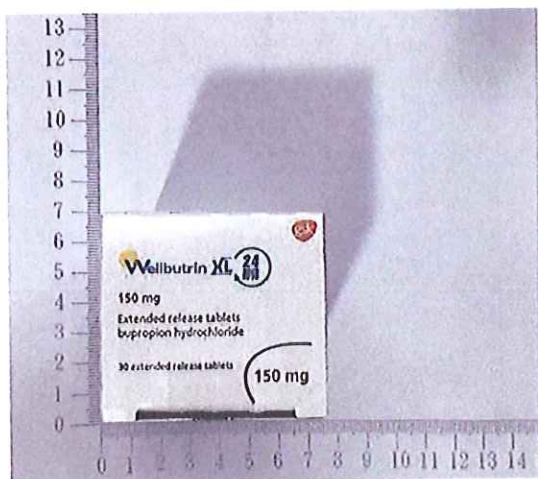
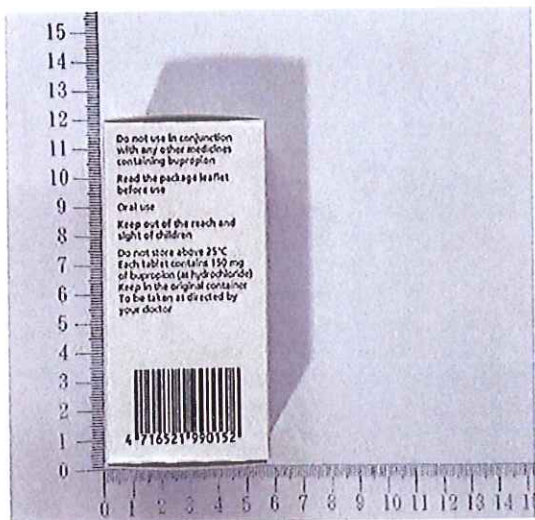
第 2 / 4 頁

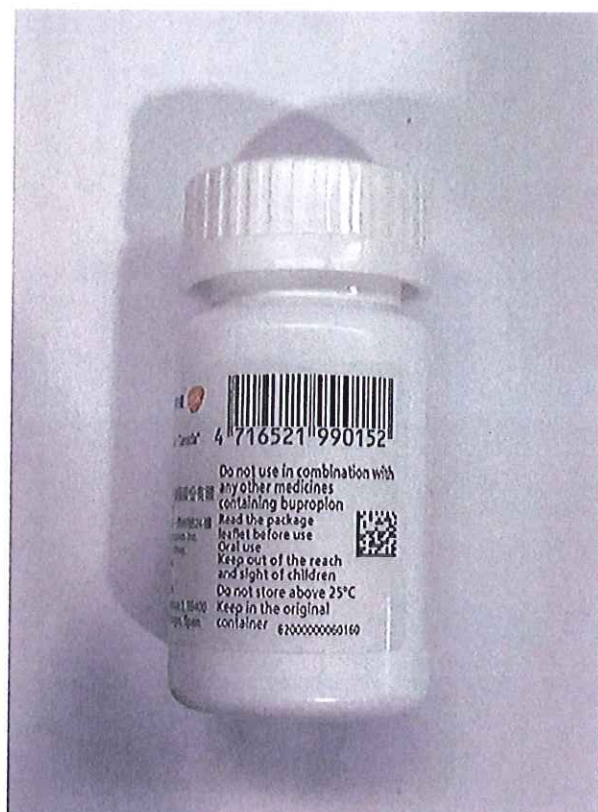
GlaxoSmithKline Far East B.V. Taiwan Branch

24F, No. 66, Sec 1, Zhong Xiao W. Rd., Taipei 100, Taiwan

Tel: 886-2-23818866 Fax:886-2-23120838







第 4 / 4 頁

GlaxoSmithKline Far East B.V. Taiwan Branch

24F, No. 66, Sec 1, Zhong Xiao W. Rd., Taipei 100, Taiwan

Tel: 886-2-23818866 Fax: 886-2-23120838

