

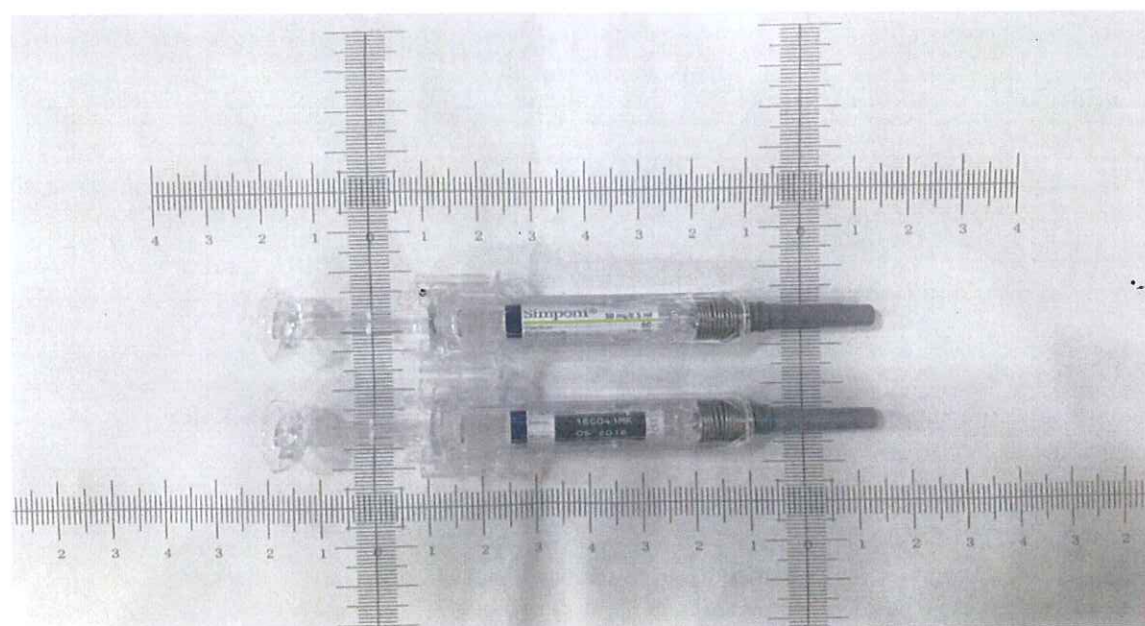
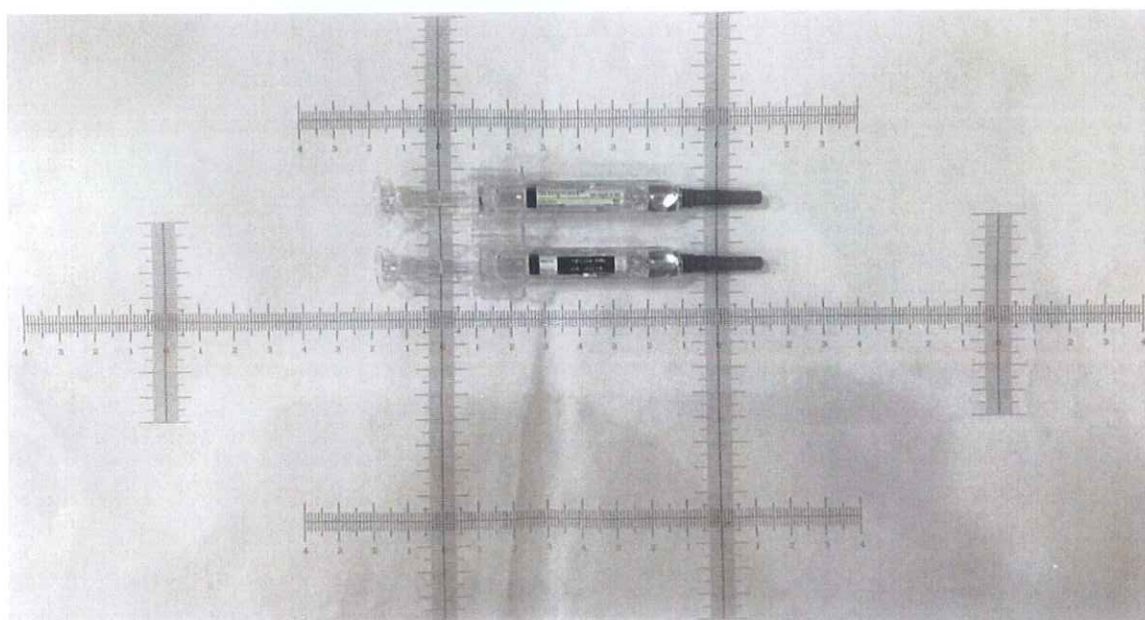


Box Simponi PCC: 35759C		Global Graphic Services janssen	
Format Ref: S/B/3456-S2 (45x29x135) Tech. info/Spec: N/A Country: TW Mat. ID Code: 35759C File Name: 35759C.ai (CS6-PC)		Inge Vermeiren: Tel.: +32 (0)14606915 - E-mail: ivermei1@its.jnj.com Shared mailbox: RA-JANBE-GRAPHDES@its.jnj.com	
PMS 540 PMS 201 PMS 583		Diecut must be protected Varnish free Varnish free & Used for glue Perforation -----	
		Date (Designer) 1. 14-APR-17 (Vincent) 2. 09-MAY-17 (Vincent) 3. 4. 5. 6. 7. 8. 9.	

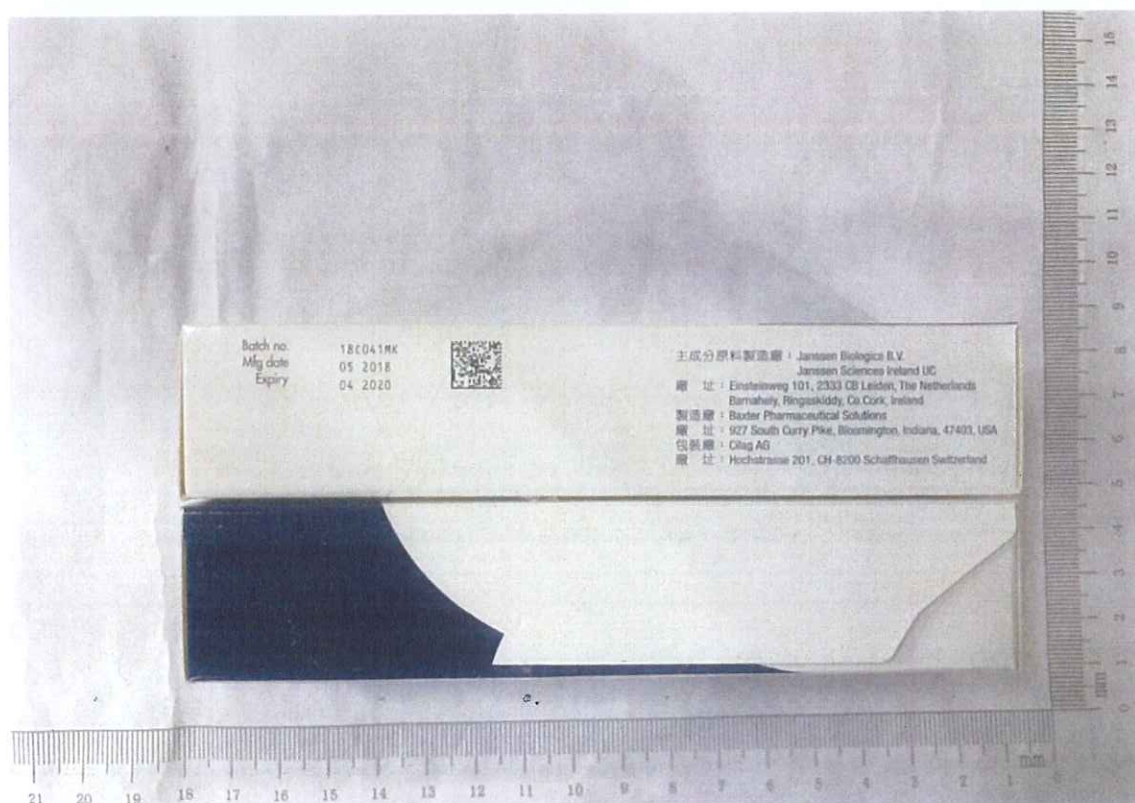


Label Simponi	Global Graphic Services			janssen	
PCC: 35762B	Inge Vermeiren: Tel.: +32 (0)14606915 - E-mail: ivermei1@its.jnj.com Shared mailbox: RA-JANBE-GRAPHDES@its.jnj.com				
<i>Format Ref:</i> S/L/3200-1 (32x27) <i>Tech. info/Spec:</i> N/A <i>Country:</i> TW <i>Mat. ID Code:</i> PCC <i>File Name:</i> 35762B.ai (CS6-PC)		Black		Janssen Varnish	<i>Date</i> (Designer) 1. 04-MAY-17 (Vincent)
		PMS 540		Diecut (not to be printed)	2.
		PMS 583			3.
		White Background			4.
		Lum Lack 7			5.
					6.
					7.
					8.
					9.

新包裝內容物



新包裝外盒 part1



The image displays two boxes of Simponi Golimumab 50 mg/0.5 ml injection, one in English and one in Chinese, placed on a ruler background. The English box (top) features a dark blue and white design with the text: "Solution for injection in pre-filled syringe", "1 x pre-filled syringe", "Subcutaneous use", "欣普尼® 注射液", "Simponi® Golimumab", "Solution for injection", "50 mg/0.5 ml", and "Janssen". The Chinese box (bottom) features a white and yellow design with the text: "每支预充注射器含 golimumab 50 mg", "欣普尼® 注射液", "Simponi® Golimumab", "50 mg/0.5 ml", and "Janssen". Both boxes include detailed usage instructions and a barcode.

